

SWL Technology

Total SAN, WAN, LAN Solutions

Phase One

Network Storage Business Plan

Contact: Henry Chen (510)656-3961


(C)SWLtech Rev.0.91 CONFIDENTIAL 1



SWL Technology Inc.

- Since 1993, SWL Technology's founders have been engaged in the design, develop, manufacture and marketing of server, network, telecommunication, wireless, and storage solutions
- **Our Mission:** To develop *cutting-edge technology* for the Storage Network Marketplace.
- **Our Goals:** To operate in a responsive and ethical manner and to create partnerships with our customers.
- SWL Technology is a Total Solution Provider that is focused on delivering Total Storage and Networking Technologies to its business customers.


(C)SWLtech Rev.0.91 CONFIDENTIAL 2



SWLtech Business Strategy

- Maintain and expand LAN customer bases
- Expand SAN & WAN customer bases, focus on medium & small size business.
- Execute marketing campaign.
- Alliance with key players.
- Alliance with OEM and ODM.
- Strong management team.
- Develop Unique Performance Products.

(C)SWLtech Rev.0.91 CONFIDENTIAL 3



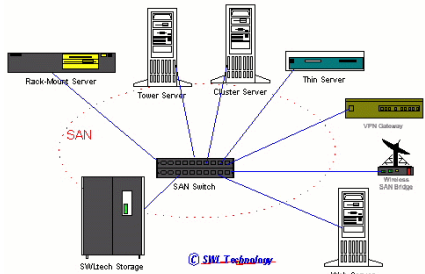
SWLtech Storage Products

- High Speed Network Storage System.
- DynaCrypto™ VPN Gateway.
- 1Gbps+ Wireless SAN Bridge.
- 4Gbps+ SAN Switch/Router.
- High Speed FC Cache SSSD.
- High Performance Network Server.
- Network Attached Storage (NAS).

(C)SWLtech Rev.0.91 CONFIDENTIAL 4

SWLtech Storage Products

Network / Storage Solutions for Storage Area Network (SAN)



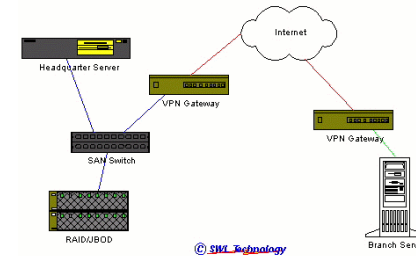
(C)SWLtech
Rev.0.91

CONFIDENTIAL

5

SWLtech Storage Products

Network / Storage Solutions for Wide Area Network (WAN)



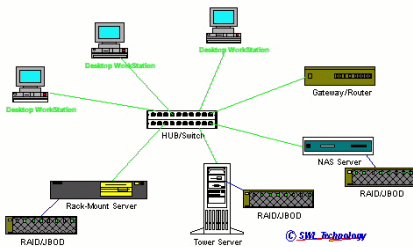
(C)SWLtech
Rev.0.91

CONFIDENTIAL

6

SWLtech Storage Products

Network / Storage Solutions for Local Area Network (LAN)



(C)SWLtech
Rev.0.91

CONFIDENTIAL

7

SWLtech Storage Products

■ Sales, Marketing and Services

- SAN Systems – Q4 2000
- High Performance Servers – Q4 2000
- High Performance Workstations – Q4 2000
- Network Solution Consulting Services – Q4 2000
- SWL Services Contracts – Q1 2001
- Multi-Building SAN Solutions – Q2 2001
- Globe Internet SAN Solutions – Q3 2001
- OEM, ODM, Support Services – Q3 2001

(C)SWLtech
Rev.0.91

CONFIDENTIAL

8

SWLtech Storage Products

Product Development

- 1Gbps+ Wireless SAN Bridge
 - release at Q2 2001
- DynaCrypto™ VPN Gateway
 - release at Q3 2001
- 4Gbps+ SAN Switch/Router
 - release at Q1 2002
- 16Gbps+ FC Controller Chipset
 - release at Q4 2002

(C)SWLtech
Rev.0.91

CONFIDENTIAL

9

1Gbps+ Wireless SAN Bridge

Product Benefits

- Super-Secure data access via wireless media.
- Speed-up remote data access.
- Dynamic encryption between DynaCrypto™ units.
- SAN/Intranet Application.
- Simplify Storage Management.
- Reduce Installation Cost.

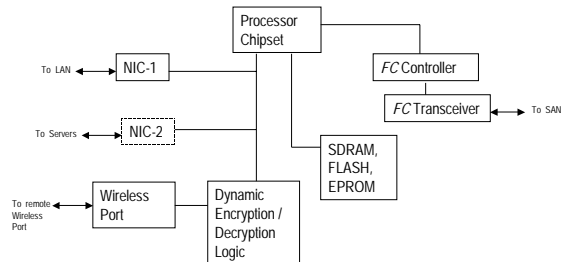
(C)SWLtech
Rev.0.91

CONFIDENTIAL

10

1Gbps+ Wireless SAN Bridge

Block Diagram



(C)SWLtech
Rev.0.91

CONFIDENTIAL

11

1Gbps+ Wireless SAN Bridge

Campus Network / Storage Solutions



(C)SWLtech
Rev.0.91

CONFIDENTIAL

12

DynaCrypto™ VPN Gateway

■ Product Benefits

- Super-Secure data access through Internet.
- Speed-up data access throughput.
- Reduce LAN traffic.
- Dynamic encryption between DynaCrypto™ units.
- Internet/Intranet Application.
- Simplify Storage Management.

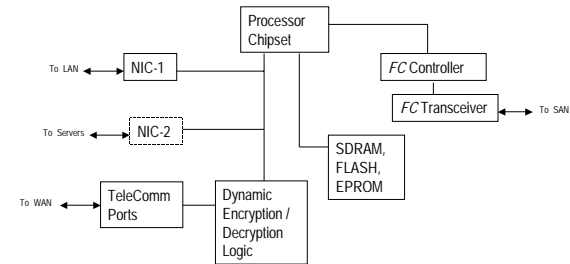
(C)SWLtech
Rev.0.91

CONFIDENTIAL

13

DynaCrypto™ VPN Gateway

■ Block Diagram



(C)SWLtech
Rev.0.91

CONFIDENTIAL

14

DynaCrypto™ VPN Gateway



(C)SWLtech
Rev.0.91

CONFIDENTIAL

15

SanBlaze™ FC Controller

■ Product Benefits

- Ultra High Speed FC Access.
- Support Multiple SMF/MMF ports.
- Interface with DWDM transceiver.
- Support OC-192c/SDH VC-4-64c.
- Compatible w/ IEEE802.3ae (Q1-2002).
- Support InfiniBand or RapidIO.

(C)SWLtech
Rev.0.91

CONFIDENTIAL

16

SanBlaze™ FC Controller

■ Product Highlights

- Virtex-E FPGA (2.5 or 1.8 V).
- High Performance ASIC (0.18 or 0.1 micron).
- Fast Dual-port RAM (upto 1.6 Tbps).
- 6-Layer Copper Interconnection.
- 4/8/16+ Gbps Interface to FC Transceiver.
- Support Multiple platforms.

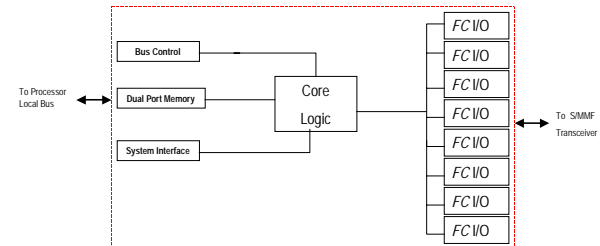
(C)SWLtech
Rev.0.91

CONFIDENTIAL

17

SanBlaze™ FC Controller

■ Block Diagram

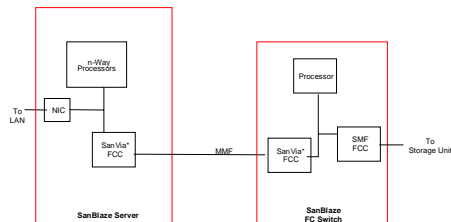


(C)SWLtech
Rev.0.91

CONFIDENTIAL

18

SanBlaze™ FCC Application



(C)SWLtech
Rev.0.91

CONFIDENTIAL

19

SanBlaze™ HBA, Switch / Router

■ Product Benefits

- High Speed Fibre Channel (FC) Access.
- Speed-up Data Process.
- Increase Storage Through-put.
- Support FC and TCP/IP protocols.
- Support Multiple Platforms.
- User-friendly SAN Management Software.
- FC HBA, FC Switch, FC Cache, FC Router, etc.

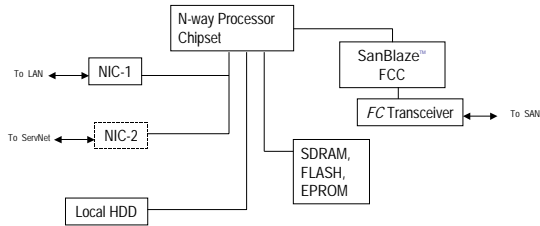
(C)SWLtech
Rev.0.91

CONFIDENTIAL

20

SanBlaze™ FC HBA

■ Block Diagram



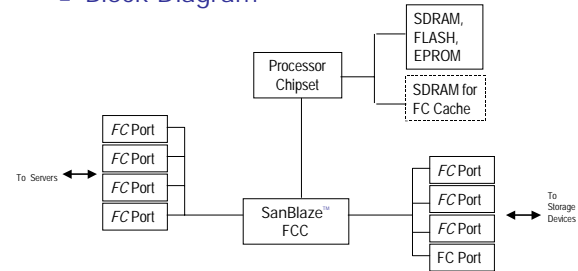
(C)SWLtech
Rev.0.91

CONFIDENTIAL

21

SanBlaze™ FC Switch

■ Block Diagram



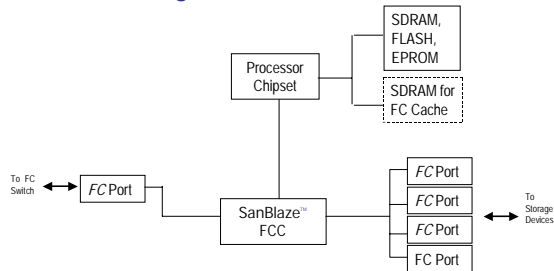
(C)SWLtech
Rev.0.91

CONFIDENTIAL

22

SanBlaze™ FC Cache

■ Block Diagram

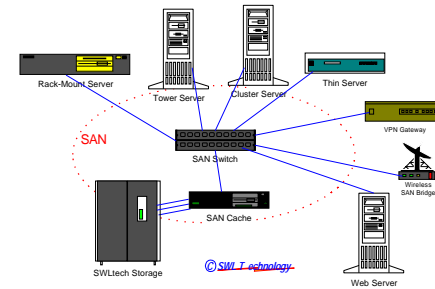


(C)SWLtech
Rev.0.91

CONFIDENTIAL

23

SanBlaze™ Applications



(C)SWLtech
Rev.0.91

CONFIDENTIAL

24

Software Specifications

Product Highlights

- P2P Dynamic Encryption/Decryption.
- Express WAN to SAN data transportation.
- High-speed LAN to SAN data transportation.
- User Friendly Storage Management.
- Storage-on-demand Management.
- Multi-Building Storage Management.
- Globe Storage Management.
- Remote Resource Acquisition.

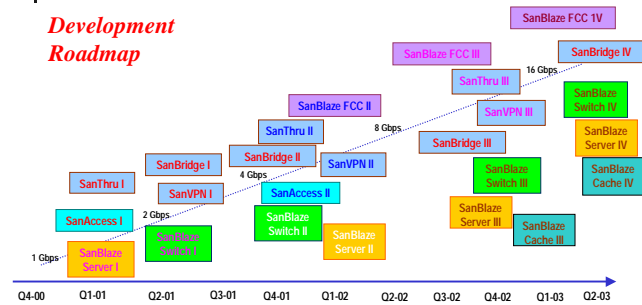
(C)SWLtech
Rev.0.91

CONFIDENTIAL

25

SWLtech SAN Products

Development Roadmap



(C)SWLtech
Rev.0.91

CONFIDENTIAL

26

SWLtech SAN Products

Sales Projections
Net Worth Projections

(C)SWLtech
Rev.0.91

CONFIDENTIAL

27

SWLtech SAN Products

(C)SWLtech
Rev.0.91

CONFIDENTIAL

28